

Technical Data

SPT80A

DIRECT DRIVE PUMP UNIT

230v - 80 LPM



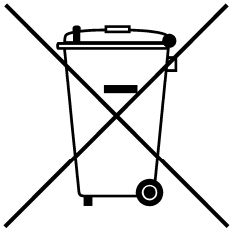
Please read carefully before commencing installation

Registered Office: HYTEK (GB) LIMITED, Delta House, Green Street, Elsenham, Bishop's Stortford
CM22 6DS UK. Registered in England No. 1915382

Tel: +44 (0) 1279 815 600 Fax: +44 (0) 1279 812 978 email: info@hytekgb.com

Web: www.hytekgb.com

ENVIRONMENTAL INFORMATION



European Directives 2002/96/EC and 2003/108/EC require that the equipment bearing this symbol on the product an/or its packaging must not be disposed of with unsorted municipal waste. The symbol indicates that this product must be disposed of separately from regular household waste streams. It is your responsibility to dispose of this and other electric and electronic equipment via designated collection facilities appointed by the government or local authorities.

IMPORTANT WARNING NOTES

1. This dispenser **MUST NOT** be used to dispense petrol or other flammable liquids.
2. It must not be sited adjacent to a petrol dispenser or any other hazardous zone.
3. On above ground storage tanks, a spring loaded angle check valve or pressure regulating valve must be fitted at the tank outlet to prevent loss of fuel under gravity in the event of vandalism or accidental damage.
4. Installation of this equipment and its associated tank, pipe work and fittings should only be carried out by qualified fuel installation engineers.
5. The installation must conform to all relevant electrical and local authority regulations and standards.
6. The supplied strainer or a suitable strainer/filter **MUST** be fitted to the suction line to prevent the pump unit from being damaged.

INSTALLATION

1. If no wall-mounting bracket is supplied, mount on a horizontal surface using the holes provided in the pump feet, or use a tank/barrel mount adaptor if provided.
2. Fit the supplied strainer to the pump inlet.
3. Connect the pipe from the tank to the suction inlet of the pump. If the pump is more than 2m from the tank the pipe should be 1½ diameter reducing to the appropriate size just before the pump inlet. Seal the threads with a suitable thread-sealing compound.
4. Connect a suitable “soft wall” hose to the pump outlet. In turn, fit a suitable trigger or automatic nozzle onto the hose. Seal both with a suitable thread-sealing compound.
5. Connect the flying lead to a suitable power supply, fused at 10 amps for 230v AC and 16A for the 110v AC as follows:

230v AC: Brown – Live
 Blue – Neutral
 Yellow/Green – Earth
6. To prime the pump, first ensure the pump is switched off, there is fuel in the tank, and the end of the suction hose is fully immersed. Remove the filter cap and pour in fuel until the pump chamber is full. Replace the filter cap and operate as per instruction for use.

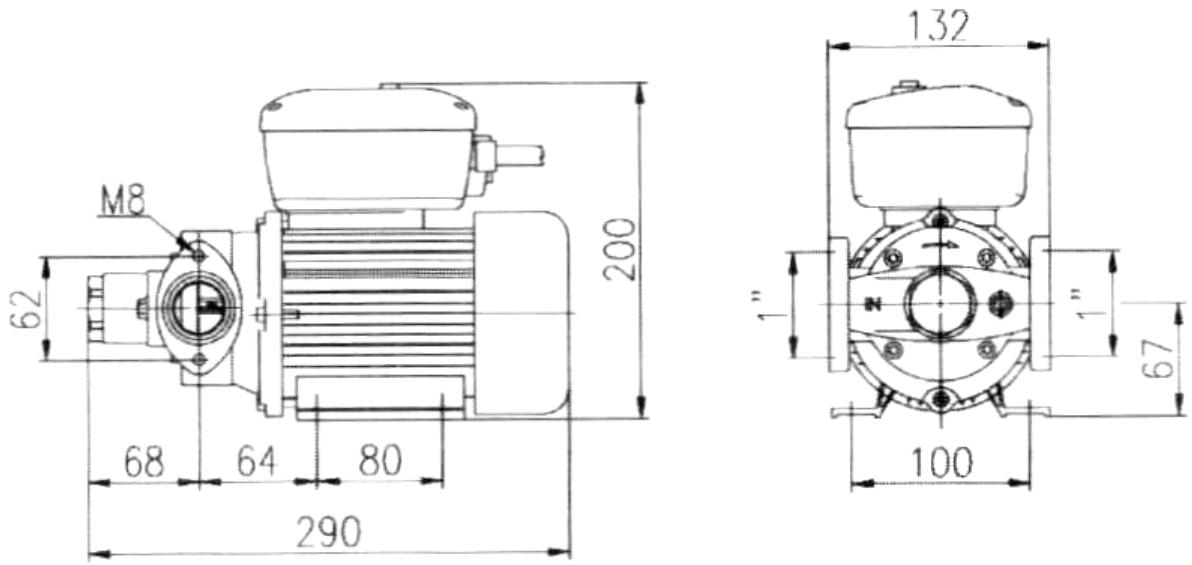
INSTRUCTIONS FOR USE

1. Switch on pump.
2. Place nozzle spout in the fuel tank.
3. Squeeze nozzle trigger to dispense fuel.
4. On completion of delivery, release nozzle trigger and remove nozzle from fuel tank.

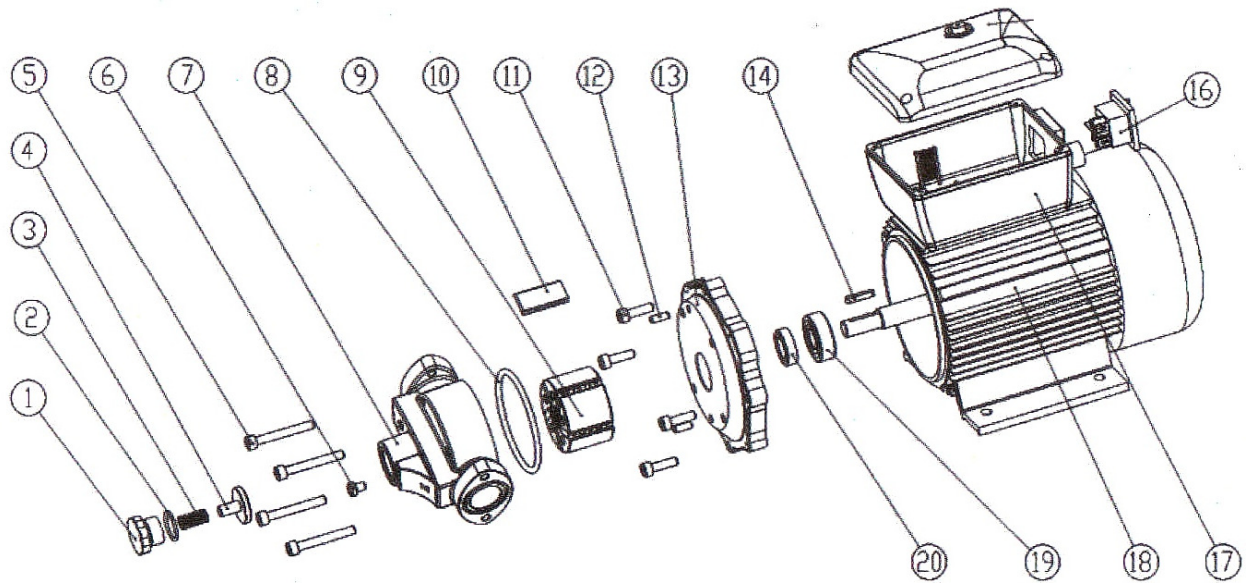
OPERATION WARNING - FAILURE TO OBSERVE THE WARNINGS BELOW MAY LEAD TO THE PUMP UNIT BEING DAMAGED:

1. Please ensure that the delivery hose is stowed correctly after each use to prevent it being run over by a vehicle.
2. Do not run the pump dry.
3. Do not run the pump for prolonged periods on bypass. (Nozzle closed).
Maximum running time on bypass = 2 minutes.
4. The supplied strainer or a suitable strainer/filter **MUST** be fitted to the suction line to prevent the pump unit from being damaged.

DIMENSIONS



PARTS DIAGRAM

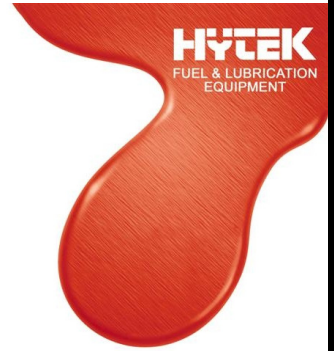


PARTS LIST

| DIAGRAM No. | PART NUMBER | DESCRIPTION |
|--------------------|--------------------|---------------------|
| 9 | SPT80A.1 | ROTOR |
| 10 | SPT80A.2 | VANE |
| 14 | SPT80A.3 | SHAFT KEY |
| 16 | SPT80A.4 | ON/OFF SWITCH |
| 7 | SPT80A.5 | PUMP HOUSING |
| 8 | SPT80A.6 | PUMP HOUSING O-RING |
| 20 | SPT80A.7 | SHAFT SEAL |
| 17 | SPT80A.17 | JUNCTION BOX |

NOTES

E.C. DECLARATION OF CONFORMITY



Date of Issue: 23/12/09

Equipment Details: SPT80A Pump Unit And Motor

Applicable standards: EMC
EN61000-6-3:2007
EN61000-3-2:2006
EN61000-3-3:2008 Emissions
EN61000-6-1:2007 Immunity

2006/95/EC Electrical Equipment (Low Voltage)

Machinery Directive 2006/42/EC
The Pressure Equipment Regulations
1999 S.I. 1999/2001
Entry Into Force:- 29 November 1999
Amended to S.I. 2002/1267

Pressure Equipment Directive 97/23/EC

Waste Electrical and Electronic Equipment
Regulations 2006
2002/96/EC 2003/108/EC

Authorized By: Clive Wellings
Technical Manager Hytek

Declaration Number: EC019/5